

## YOUR VOTE COUNTS!



It is a pleasure to serve as a Chamber Board member in a community that I call “home.” Our region has always been known for its hometown feel, a “village” that strives to raise our children in a safe, loyal, and civic minded environment here in the Mon Valley Region.

If you are a lifelong resident of the Mon Valley, we all can say we have watched our communities change. My fondest memory as a child was of my mother and I spending countless hours window shopping in downtown Charleroi and Monessen. “Mom and Pop” stores made our communities flourish. However, our values have never wavered. We still have the hometown feel, we still feel safe, and regardless of issues that we now face, we are still civic minded. In 2016, our civic duty is more important than ever. We have two retiring State Representatives, Peter J. Daley and Ted Harhai and an outgoing President of the United States. Whether we are Democrats, Republicans, or Independents these individuals served our community and country with great pride. And for that, we all should feel grateful for the time they served the people.

Soon, you will be asked to perform your civic duty to vote. I grew up with the teaching that voting is a privilege, not a right. We live in a nation that affords so many freedoms and one of those freedoms is to vote - for that “one” person who will serve with pride and honorable intentions. For this election I am putting aside my party affiliation and looking at the election as one.

One of the main reasons for low voter turnout is because of the weather - a mind set being **“does my vote really count?”** I was able to witness a person lose a local election by one vote. Yes, one vote. So, when I asked myself does “my vote truly count?” The answer was a resounding, yes!

This upcoming primary election is the most important one that I can remember in my lifetime. Mr. Daley and Mr. Harhai have been household names and now they are passing the torch onto someone else.

I encourage you, your family, and your friends to vote on April 26, 2016, and then again on November 8, 2016 in the general election. TOGETHER we can make a difference.

**“Always vote on principle, though you may vote alone, and you may cherish the sweetest reflection that your vote is never lost.” – John Quincy Adams (6<sup>th</sup> U.S. President)**

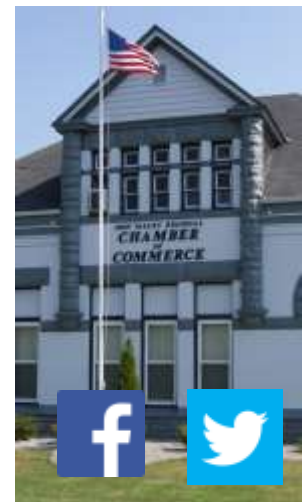
Sincerely,

*Diann Donaldson*

Diann is a MVRCC Board Member serving on the Chamber’s Executive Committee and is Chair of the Membership Committee. She owns Reliance Business Solutions, a merchant services business located in Belle Vernon.

## Inside this issue:

New Members & Renewals	2-3
Member Spotlights	4-5
Chamber Board of Directors	6
Chamber News	6
Hoodie Hoo Thank You	7
Member News	8-9
April Luncheon	10
Directory Advertising Opportunity	11
“Blast from the Past”	Insert



Mon Valley Regional  
Chamber of Commerce

One Chamber Plaza  
Charleroi, PA 15022

724-483-3507 Fax: 724-489-1045  
E-mail: [members@mvrchamber.org](mailto:members@mvrchamber.org)  
website: [www.mvrchamber.org](http://www.mvrchamber.org)

President: James Protin  
V. President: Atty. Rick Mudrick  
Secretary: David Galloni  
Treasurer: Milton Kubik  
Executive Board: Armand Ferrara  
Executive Board: Diann Donaldson

Chamber Staff:  
Executive Director: Debra Keefer  
Admin. Assistant: Kim Kopec  
Special Assistance: Donna Angelo  
We regret any errors or omissions  
in this newsletter

## In the Chamber Spotlight...

February — Presbyterian Senior Care

March — S.E. Technologies, LLC

See the stories on pages 4 & 5

## WELCOME NEW MEMBERS\*

**Cialone's Business Services**

Ruth Cialone  
128 Thompson Avenue, Donora, PA 15033  
724-379-5558  
*Small Business Services*

**Comcast Spotlight**

Judy Eans  
150 Gault School Road, Connellsville, PA 15425  
724-626-9890  
www.comcastspotlight.com  
*Media*

**5<sup>th</sup> Street Escape Room**

Jason Atkins  
434 Fallowfield Avenue, Charleroi, PA 15022  
724-483-4618  
www.5thstreetescaperoom.com  
*Entertainment*

**Greater Washington County Food Bank**

Heidi Hoffman  
909 National Pike West, Brownsville, PA 15417  
724-632-2190  
www.gwcfb.org  
*Non-Profit*

**Donn Henderson**

22 Warner Avenue, Charleroi, PA 15022  
*Associate Member*

**Janney Montgomery Scott**

Chris Filicky  
43 South Beeson Boulevard, Uniontown, PA 15401  
724-425-1010  
www.fayettelegacy-janney.com  
*Financial*

## MEMBER RENEWALS\*

70 Years

Charleroi Area Teacher's Association

68 Years

World Kitchen, LLC

58 Years

Interstate Paper Supply Company

50 Years

Charleroi Elks Club  
Guttman Group  
Seals & Demillion, PC

45 Years

Davies Ford of Charleroi  
Lettrich Group Architects/Planners, Inc.  
Mid Mon Valley Transit Authority

40 Years

Lee Supply Company  
Ron Monack

30 Years

The Back Porch Restaurant  
Charleroi Sweeper Center

25 Years

Charleroi Area School District  
Charleroi Borough  
Culligan Water Treatment  
PNC Bank  
Kenneth Wiltz  
Yohe Roofing, Inc.

15 Years

**Campy's Pizza**  
Charleroi Paint & Glass  
Cupari Home Improvements  
Fairpoint Communications  
Home Warehouse  
Kidney Disease & Hypertension Associates  
Middle Monongahela Industrial Development Association  
Northwest Savings Bank

## MEMBER RENEWALS \*

15 Years continued  
 Right Byte Computer Center  
 RTS Packaging  
 Tri State Hydraulics, Inc.

10 Years

**Chaney's Natural, LLC**  
 Charleroi Fire Department  
 Community Bank  
 David Davis Communications, Inc.  
 Delattre Corporation  
**Double M's Pizza**  
 Ductmate Industries, Inc. (Charleroi)  
 Dunlevy Gardens  
**Joseph's Nursery & Garden Center**  
 Mon Valley Care Center  
 Mon Valley Progress Council  
 Mon Valley YMCA  
 Mornak Excavation, Inc.  
 PA CareerLink, Mon Valley  
 Presbyterian Senior Care  
 Rotary Club of Charleroi  
 S.E. Technologies, LLC  
 Southwestern Pennsylvania Human Services, Inc.  
 Spartan Health Surgicenter  
 Stewart Creative  
 Tregembo Motors  
 Tri-County Patriots For Independent Living  
 Vilella Remodeling, LLC  
 Waddell & Reed, Inc.  
 The Willow Room

5 Years

Amcom Office Systems  
 Aquatorium Innovations, Inc.  
 Ashcraft Records Management & Storage  
 Belle Vernon Area School District  
 Blank Welding  
 EJ Burns Construction Company  
 CASA For Kids, Inc.  
 CCA Solutions, Inc.  
 Ferrara Appraisal Services  
 Gentiva Hospice  
 Diana Irey-Vaughan, Washington County Commissioner  
 MarBill Diamonds & Jewelry  
 Mon Valley Networking

5 Years continued  
 Morgan Excavating, LP  
 Orthopedic & Sports Physical Therapy Associates, Inc.  
 (OSPTA)  
 OSPTA @ Home and Hospice  
 Peoples Natural Gas  
 Riverside Dental Care  
 Roberts Auto Body  
 Rupert Chiropractic Clinic  
 South Hills—Mon Valley Messenger  
**Susan Jo's Salon**  
 United Way of Mon Valley  
 Valley Outpatient Rehabilitation  
 Washington Wild Things/The Rebellion

All Other Renewals

Advanced Orthopaedics & Rehabilitation  
 Bayshire Properties, LLC  
 California University of Pennsylvania  
 Central Blood Bank  
 Crystalline Technology, LLC  
 Duke of Oil  
 Enterprise Rent-A-Car  
 Fallowfield Township  
 Leadership Washington County  
 Anthony Lombardi  
**Mariner's Hall**  
 Matrix Property Settlements, LLC  
 Mon River Industrial Group, LLC  
**Neff's, LLC**  
 Nemacolin Country Club  
 Off the Wall Arts  
 Office of Vocational Rehabilitation  
 Mark A. Smith  
 Tri-County Carpet Cleaning  
 Valley Pool & Spa  
 VisuGroup  
 Eugene A. Vittone, Washington County District Attorney  
 Washington County Council on Economic Development

*Thank You!*

\*These new members and the following renewals only reflect dues received as of March 15, 2016.



## January Member Spotlight PRESBYTERIAN SENIORCARE

Presbyterian SeniorCare is a not-for-profit that's been focused on just one thing for more than 85 years – helping older adults live positively.

As the region's largest eldercare provider, they provide a continuum of services and living options, and invest significantly in their people. They believe that people are what make the difference between good and great. Everyday lives are being enriched and changed positively by Presbyterian SeniorCare's compassionate and well-trained staff and volunteers – people whose dedication to excellence is consistent with their faith-based mission of improving the lives of older adults from all walks of life.



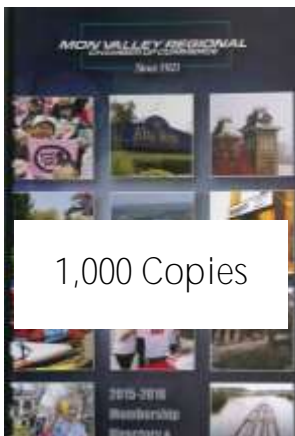
Presbyterian  
**SeniorCare.**

Presbyterian SeniorCare is privileged to serve more than 6,500 older adults through its continuum of 54 communities at 45 locations across 10 Western Pennsylvania counties. Care and service options in the Washington area include:

- Personal Care at Southminster Place
- Skilled Nursing at Southmont which offers Rehabilitation Services and Skilled Nursing.
- **Specialized Alzheimer's and Dementia Care at Southminster Place and Southmont**
- Affordable and Supportive Housing Communities: Presbyterian SeniorCare offers affordable housing in all sizes and types – from condominiums to high-rise apartments for income-qualified seniors. In the Washington area there are supportive housing communities, including The Oaks at Center in the Woods.
- In-home and Community-based Programs like Presbyterian SeniorCare at Home, which is both a licensed home care agency and a licensed home health agency in Pennsylvania.
- They also offer Longwood at Home: Longwood at Home is the only licensed Continuing Care at Home program in Western Pennsylvania.

The Mon Valley Regional Chamber is honored to recognize Presbyterian SeniorCare for their many years of loyal membership and for the vital services they provide to our region. For more information about Presbyterian SeniorCare visit [www.SrCare.org](http://www.SrCare.org) or call 724-222-4300.

# Reserve Your Space Today!



Advertising in the 2016-2017 Membership Directory & Resource Guide will put your business in front of thousands of targeted clients! Capitalize on your investment with the Chamber by utilizing this valuable tool to increase your current market growth and reach new customers.

- ◆ Full Page Ads—\$300
- ◆ Business Cards—\$125
- ◆ 1/2 Page Ads—\$200
- ◆ 1/8 Page Ads—\$75

Space is Limited! Deadline for ads—APRIL 15th!

Call Kim at 724-483-3507 TODAY!

*See page 11 for more information.*



*March Member Spotlight*  
**S.E. TECHNOLOGIES, LLC**

S.E. Technologies, LLC is in the member spotlight for March. S.E. Technologies, LLC (SET), is a Pittsburgh-based professional and technical services firm, provides creative technical and management solutions for the complex environmental problems of industry and government. Privately held, SET fosters an entrepreneurial environment and a corporate culture that is customer driven and safety focused.



S.E. Technologies was founded in 1992, and has its corporate headquarters in Bridgeville, PA with strategic office locations in Chagrin Falls and Zanesville, Ohio as well as other geographic regions. SET provides comprehensive environmental services including permitting, environmental compliance auditing, site investigation and remediation, waste management, industrial hygiene monitoring, environmental engineering, and health and safety consulting. Their clients include commercial real estate brokers/developers, attorneys, banks, real estate investors, insurance companies, industrial facilities, real estate management companies, manufactures, and firms involved in shale gas E&P and Midstream operations.

The mission at SET is to be efficient, highly responsive and cost effective on every project. This is accomplished through the efforts of a knowledgeable and competent staff focused on the needs of their clients.

Roger A. Dhonau, PE, QEP is President of SE Technologies, whose headquarters are located at 98 Vanadium Road, Bridgeville, PA 15017. Find out more about SET at [www.se-env.com](http://www.se-env.com) or by calling 412-221-1100. Carol Delfino, Sr. Safety Consultant, is a familiar face at our MVRCC functions and can help you with any questions about their services. The Mon Valley Regional Chamber of Commerce appreciates S.E. Technologies' continual membership and support since 2002.

**SAVE THE DATE!**  
**JUNE 2, 2016**

MON VALLEY REGIONAL CHAMBER OF COMMERCE  
**Melvin B. Bassi**  
 Memorial Golf Tournament

**NEMACOLIN COUNTRY CLUB**

Route 40 West  
 Beallsville, PA 15313

Sponsorships Available  
 Call 724-483-3507

Please Note:

Next Golf Committee Meeting:

Thursday, March 31, 2016 at Noon in the Chamber Conference Room.

**2016 MVRCC BOARD OF DIRECTORS**



The 2016 MVRCC Board of Directors are seated (l to r): Trish Brickner, Josie Pelzer, Diann Donaldson, Debra Keefer-Executive Director, Debbie Buck, Alyssa Mendola, and Kim Kopec-Admin. Asst. Back Row (l to r): Randy McMahon, Angela Stay, Lynn Baron, James Protin, Milt Kubik, Casey Clark, J.J. Georgagis, and Wayne Ray. Not Pictured: Donna Angelo-Financial Asst., Keith Bassi, Vito Dentino, Armand Ferrara, Dave Galloni, Brook Gardner, Don Good, Jeff Mendola, Rick Mudrick, Donna Ramusivich, Luther Sheets, Phil Sparacella, and Ken Wiltz.

**OFFICE SPACES FOR RENT**

A 2<sup>nd</sup> floor office suite is available in the historic Chamber of Commerce building located at One Chamber Plaza, in the heart of the business district of Charleroi. The space would be perfect for a small business or non-profit agency. There is a shared restroom and conference area and all utilities are included. Adjacent free parking. Call 724-483-3507 for more details.



**POT OF GOLDWINNERS**



Congratulations to the Mon Valley Herald-Standard, **Pot of Gold Winner at the Chamber's February luncheon** and to the Mid Mon Valley Transit Authority, Pot of Gold Winner at the March luncheon. Pictured (l to r) above are Mike Palm, Chris Buckley, Bob Pinarski and Clint Rhodes from the Mon Valley Herald Standard. Member must be current on 2016 dues to be eligible. Next chance to win—April 12th at the Chamber Luncheon.

**“HOODIE HOO” DAY A SUCCESS—THANKS TO SPONSORS, MERCHANTS, DONORS AND PARTICIPANTS!**

The 3rd Annual Hoodie Hoo Day hosted by the Mon Valley Regional Chamber of Commerce took place on Saturday, February 20, 2016 in downtown Charleroi. The weather was picture perfect for the



“Hoodie Hoo” shout to chase those winter blues away. Thank you to all who participated in this fun and festive event.



More pictures can be found on the MVRCC FaceBook page.

*Sponsored by:*

*Washington County  
Tourism Promotion  
Agency*



*Donations for Raffle Ticket*

- Armando's Pizza
- Bruno and Sons Diner
- Citizens Bank
- Cotromano's Restaurant
- 5th Street Barbeque
- First Commonwealth Bank
- Hey Juicy
- Highway Appliance
- Itty Bitty Treasurers
- Legal Shield-Lois Dille
- Edward Mendola, CPA
- Mon City Apparel
- Mon Valley Herald-Standard
- Mon Valley Regional Chamber of Commerce
- Neff's, LLC
- North Charleroi Dairy Queen
- Off The Wall Arts
- Prima Diva Boutique
- Rego's Restaurant
- River House Cafe'
- Seezuns
- Steel Dog Construction
- Susan Jo's Salon
- Tri County Carpet Cleaning
- Valley Pool & Spa
- Vintage Valley Too

*Participating Merchants*

- Armando's Pizza
- Bruno and Sons Diner
- Cotromano's Restaurant
- Dee's Cricket
- 5th Street Escape Room
- Full Armor Fitness
- Gene-N-Boots Candies, Inc.
- Mon City Apparel
- Neff's, LLC
- Off the Wall Arts
- Prima Diva Boutique
- Rego's Restaurant
- River House Café
- Seezuns
- Studio K
- Subway/TCBY
- Susan Jo's Salon
- Valley Pool and Spa
- Vintage Valley Too

*A Special Thanks and Hoodie Hoo To*

- Borough of Charleroi
- Charleroi Community Park Trustees
- Charleroi Police Department
- Diann Donaldson
- D.J. Donn Henderson
- TEAM Charleroi
- Ed Uhutch
- Susan Jo Johnson, Susan Jo's
- U.S. Postal Service & Charleroi Post Office
- VisuGroup - Martina Thomas

All MVRCC Board Members  
for selling raffle tickets and helping out!

Rego's Restaurant and  
RiverHouse Café for Hosting  
Guest Bartenders  
Macco Cannoni and Deb Keefer  
Raised \$638.75 for City Mission

*MVRCC Staff*

Deb Keefer, Kim Kopec, Donna Angelo



## NOW OPEN FOR BUSINESS IN DONORA



The MVRCC recently joined family and friends at a ribbon cutting held at B and B Auto Service at 948 McKean Avenue in Donora. B and B offers a wide variety of auto repair services, including PA inspection. Seen here joining in the celebration is (left to right) Jim Protin, MVRCC President, Diann Donaldson, MVRCC Executive Committee, John Boyd, partner, Nancy Boyd, managing partner, Steve Boyd, partner, Don Pavelko, Mayor of Donora holding granddaughter Mia Osowski, Bridget Bane, Aaron Bane, partner, Jerry Bane, Shawn Bane, Bob Bane, Kim Perrotti, and Trish Brickner, MVRCC Board Member.

Please call B and B Auto for your auto repair needs at 724-379-4441.



Over 75 members and guests were in attendance for the MVRCC March luncheon at the Willow Room which featured a panel discussion of local leaders from Fayette, Washington and Westmoreland Counties. Shown here are (l to r): Bob Shark, Fay-Penn Economic Development Agency, Washington Co. Commissioner Larry Maggi and Westmoreland Co. Commissioner Gina Cerilli.

## GOOD FRIDAY SERVICE SET AT MARY, MOTHER OF THE CHURCH

Mary, Mother of the Church Catholic Parish in Charleroi has a beautiful, inspiring Tenebrae Service at 7:00 PM on Good Friday, March 25<sup>th</sup>. Under the direction of Josie Merlino, the program is deeply moving, adding to the solemn tone of Good Friday.

Mary, Mother of the Church is located at 7<sup>th</sup> Street & Washington Avenue in Charleroi. All valley residents (not just Catholics) are welcome and encouraged to attend this special service.





**MEMBER NEWS**

**MEMBER TO MEMBER DISCOUNT OFFER**

Handyman Matters  
724-258-4884

Get Your To-Do-List Done Today!  
\$25.00 off any job—2 hour minimum.

For a complete listing of current Member to Member Discounts go to [www.mvrchamber.org/M2M-directory](http://www.mvrchamber.org/M2M-directory)

*Have a discount to offer fellow Chamber Members? Call Kim or Deb today at 724-483-3507 to participate in this FREE program!*

**MVH DAY AT SALATINO'S RIVER HOUSE CAFÉ TO BENEFIT AUXILIARY**

The Auxiliary of Mon-Vale Health Resources, Inc. is partnering with a popular Charleroi restaurant to host a fun – and filling – fundraiser. Monongahela Valley Hospital Day at **Salatino's River House Café** – which is open to the public – is set for Thursday, April 7, from noon to 10 PM. Ten percent of all the food sales during the event will be donated to the Auxiliary, which raises funds that are used for patient care at Monongahela Valley Hospital.

MVH President and CEO Louis J. Panza Jr. will serve as guest bartender from 3:30 to 6 PM. The event will also feature a specialty basket raffle. All of the funds in the bartender tip jar will also be donated to the Auxiliary.

Located at 506 McKean Avenue, Salatino's River House Café offers dine-in, take out or delivery.

"The Auxiliary is grateful to Salatino's River House Café for providing us this opportunity to raise funds for Monongahela Valley Hospital," said Auxiliary Services Manager Janet Cieply.

For more information, contact 724-258-1090.

In Partnership with the Washington County Chamber of Commerce  
General Industries Breakfast Briefing  
& First Swing Golf Outing featuring  
Barry R. Niccolai, Assistant Executive Director Centerville Clinics, Inc.

Friday, April 29, 2016  
Nemacolin Country Club  
Route 40, Beallsville, PA  
7:45 AM - 9:00 AM Breakfast Briefing,  
Golf to follow (very limited)  
*Presenting Sponsor: Community Bank*

*RSVP: Washington County Chamber of Commerce at 724-225-3010 or register on line at [www.washcochamber.com](http://www.washcochamber.com)*

13 Wharf St  
Dunlevy, PA 15432  
412-445-7086

**Mariner's Hall**

**Arts & Craft Showcase**

Featuring Local Vendors

Benefiting **MAKE-A-WISH.**

**ARTISTS DESIGNERS**

**LOCAL MUSIC**

**ARTISANAL FOOD**

Join our thriving community of crafters / artists

**March 26, 2016**

**Noon until 4 pm**

**Raffles & Chinese Auction**

**Free Admission**

The Make-A-Wish Foundation® of Greater Pittsburgh and The Village where you live a part of the official registration and financial information may be obtained from the Pennsylvania Department of State by calling toll free, within Pennsylvania, 1-800-732-0999. Registration fee is \$100 minimum.



# Chamber LUNCHEON

**Tuesday, April 12, 2016**

11:45 AM -1:00 PM

*Lunch Begins Promptly at Noon!*

**Monongahela Valley Hospital  
Lombardi Conference Center**

1163 Country Club Road  
Monongahela, PA 15063

**\$15.00/Member  
\$18.00/Non Member**

*\*parking token included*

*No on-site registrations, please!*



**Speaker**

**Patrick G. O'Brien**

Sr. Exec. Vice President and  
Chief Operating Officer



**Community Bank**  
The Better Business Bank

**Sponsorship Available - call  
Kim or Deb 724-483-3507**

***"Noble Professions  
Need Servant Leaders"***

TELEPHONE 724-483-3507 OR FAX 724-489-1045 BY Friday, April 8, 2016

OR PLEASE TRY OUR EASY ON-LINE REGISTRATION!—[www.mvrchamber.org](http://www.mvrchamber.org)

Company Name: \_\_\_\_\_ Phone: \_\_\_\_\_

Attendee(s) \_\_\_\_\_

Check enclosed for \$ \_\_\_\_\_

Credit Card: VISA \_\_\_ MasterCard \_\_\_ Discover \_\_\_ Bill my credit card \$ \_\_\_\_\_

Expiration Date: \_\_\_\_\_

Name. \_\_\_\_\_ Card No. \_\_\_\_\_

Billing Address \_\_\_\_\_

Signature \_\_\_\_\_



**WIN THE  
Chamber's Pot Of  
Gold!**

**Member Must Be  
Current on 2016 Dues  
and Present To Win**

**\*NO SHOWS WILL BE INVOICED – WE ARE CHARGED FOR YOUR RESERVATION.  
Make checks payable to "MVRCC" One Chamber Plaza, Charleroi, PA 15022**

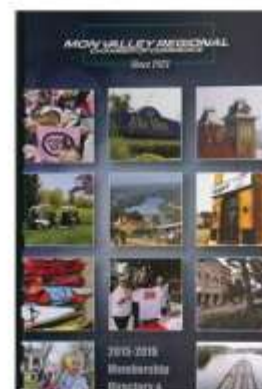


## 2016-2017 Membership Directory & Resource Guide

*Same Great Advertising Rates!*

We hope that you will join us in showcasing your business with an ad in this year's membership directory. Same great rates as last year!

[www.mvrchamber.org](http://www.mvrchamber.org)



### AD RATES & SIZES

Select Ad Size ✓	Ad Size	Dimensions	Price
-SOLD-	Back Cover	5-½" w x 8-½" h	\$500.00
-SOLD-	Front Inside Cover	4-½" w x 7-¼" h	\$400.00
-SOLD-	Back Inside Cover	4-½" w x 7-¼" h	\$400.00
	Full Page	4-½" w x 7-¼" h	\$300.00
	Half Page	4-½" w x 3-½" h	\$200.00
	Quarter Page	2-1/8" w x 3-½" h	\$125.00
	Eighth Page	2-1/8" w x 1-¾"	\$75.00
	Ad Design	Additional charge	\$20.00

**YES**, I am pleased to advertise in the 2016-2017 Membership Resource Directory. Indicate ad size above.

- My ad will be sent to the Chamber by **April 15 2016**
- Please use the same ad as last year.
- I am indicating my ad size and enclosing my ad information to have an ad designed by chamber staff. (Additional \$20.00 charge)

#### RESERVE SPACE ASAP!

*Ad space is limited and available on a first come - first serve basis. The deadline for ad reservations is **April 15, 2016**.*

#### INSTRUCTIONS FOR SUBMITTING ADS

- ◊ JPEG or PDF format preferred
  - ◊ Fonts—please embed in pdf files
- All ads submitted are subject to the approval of the Mon Valley Regional Chamber of Commerce.*

#### Want help designing your ad?

Contact Kim at 724-483-3507 or e-mail [members@mvrchamber.org](mailto:members@mvrchamber.org)  
Additional \$20.00 fee applies.

Submit ad to [members@mvrchamber.org](mailto:members@mvrchamber.org)

COMPANY/ORGANIZATION \_\_\_\_\_

CONTACT PERSON \_\_\_\_\_

BUSINESS ADDRESS \_\_\_\_\_

TELEPHONE NUMBER \_\_\_\_\_

Total Due \$ \_\_\_\_\_  Please Invoice

Payment:  Check  VISA  MasterCard  Discover

Card No. \_\_\_\_\_

Expiration Date \_\_\_\_\_

Name on Card \_\_\_\_\_

Billing Address \_\_\_\_\_

Signature \_\_\_\_\_

Make checks payable to: Mon Valley Regional Chamber  
One Chamber Plaza, Charleroi, PA 15022

**For questions or more information contact Kim Kopec at [members@mvrchamber.org](mailto:members@mvrchamber.org) or 724-483-3507. Reserve your space today! ◊ FAX TO 724-489-1045 ◊ Deadline APRIL 15, 2016**

*PLEASE NOTE: Advertising must be paid in full within 60 days of publication date.*



“Serving the Business Community Since 1921”

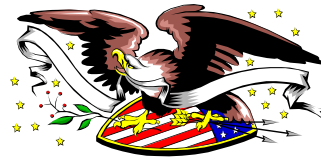
REGIONAL REPORTER

One Chamber Plaza, Charleroi, PA 15022

724-483-3507

members@mvrchamber.org

Return Service Requested



PRSTD STD  
US POSTAGE  
PAID  
Permit No. 17  
MONESSEN, PA



Let us develop a comprehensive plan to protect your business, your family, and your bottom line. Our extensive portfolio includes:

- Individual and Group Health Insurance
- Medicare Products
- Dental and Vision Insurance
- HR Solutions
- Business Insurance Dividend Program
- Energy Savings Program
- Voluntary Benefits and Personal Insurance

Get real, bottom line, energy cost savings for your business today! Through ChamberChoice, OnDemand offers competitive energy solutions to Chambers Members. Call 1.866.699.9968 for more information!

For more information, contact us at 1-800-377-3539 or visit [www.chamberchoice.com](http://www.chamberchoice.com).




## Mark Your Calendar For These Upcoming Events!

Watch the US mail, e-mail, Facebook, Twitter and website for information on all upcoming events!



[www.mvrchamber.org](http://www.mvrchamber.org)



Tuesday, April 12, 2016—Chamber Luncheon, Monongahela Valley Hospital, 11:45 AM—1:00 PM.  
*See page 10 for details.*

Friday, April 15, 2016—Chamber Directory deadline. All listing updates are DUE!

Wednesday, April 20, 2016—Chamber Board Retreat, California University of PA, 8:00 AM—1:00 PM.

Friday, April 29, 2016—First Swing Breakfast Briefing, Nemacolin Country Club, 7:45 AM—9:00 AM, Golf to follow.

Tuesday, May 10, 2016—Chamber Luncheon, TBD, 11:45 AM—1:00 PM.

Thursday, June 2, 2016—Melvin B. Bassi Memorial Golf Tournament, Nemacolin Country Club, 8:00 AM  
Registration, 9:00 AM Shotgun Start.



BE A MEMBER!